



APC-2009 HTF D8 Infused Mimosa Suver Haze

Sample ID: G1D0035-02 Matrix: Industrial Hemp

Test ID: 5014613

Source ID:

Date Sampled: 04/01/21 Date Accepted: 04/01/21

Harvest/Prod. Date: 3/31/21

Results at a Glance

Total THC : 0.5176 %

Total CBD : 15.69 %

Total CBG : 0.9368 %

Pesticides : PASS

Residual Solvent Analysis : PASS



Brittany Wiemer

Brittany Wiemer
Quality Officer - 4/5/2021

All QC samples met acceptance criteria of the method; data available upon request. These results relate only to the sample included on this report. The report may not be reproduced except in full, without the written permission of Green Leaf Lab.

This is for informational testing and is not compliance testing. Lab results apply to the sample as received.



APC-2009 HTF D8 Infused Mimosa Suver Haze

Sample ID: G1D0035-02

Matrix: Industrial Hemp

Test ID: 5014613

Source ID:

Date Sampled: 04/01/21

Date Accepted: 04/01/21

Harvest/Prod. Date: 3/31/21

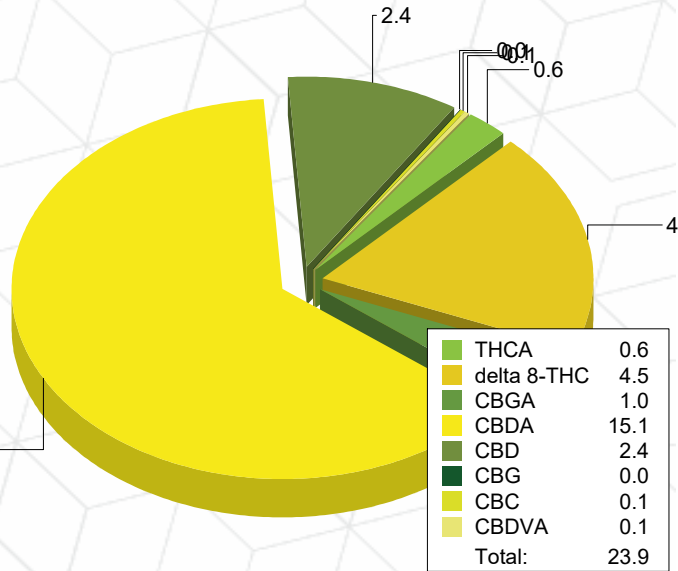
Potency Analysis

Date/Time Extracted: 04/03/21 12:31

Analysis Method/SOP: 215

Batch Identification: 2114056

Cannabinoids	LOQ (%)	% by Wt.	mg/g	Cannabinoids Profile	
Total THC	0.009080	0.5176	5.176		
Total CBD	0.008300	15.69	156.9		
Total CBG	7.900E-4	0.9368	9.368		
THCA	0.002920	0.5901	5.901		
delta 9-THC	0.009080	< LOQ	< LOQ		
delta 8-THC	0.01796	4.538	45.38		
THCV	0.005055	< LOQ	< LOQ		
THCVA	0.001885	< LOQ	< LOQ		
CBD	0.006220	2.438	24.38		
CBDA	0.008300	15.11	151.1		
CBDV	0.005000	< LOQ	< LOQ		
CBDVA	0.001640	0.05212	0.5212	15.1	
CBN	0.002990	< LOQ	< LOQ		
CBG	7.900E-4	0.02867	0.2867		
CBGA	7.900E-4	1.034	10.34		
CBC	0.008965	0.08493	0.8493		



Total THC = delta 9-THC + (THCA * 0.877)

Total CBD = CBD + (CBDA * 0.877)

Total CBG = CBG + (CBGA * 0.878)

LOQ=Limit of Quantification, the lowest measurable concentration of an analyte.



ISO 17025
ACCREDITED
LABORATORY

Brittany Wiemer

Brittany Wiemer
Quality Officer - 4/5/2021

All QC samples met acceptance criteria of the method; data available upon request. These results relate only to the sample included on this report. The report may not be reproduced except in full, without the written permission of Green Leaf Lab.

This is for informational testing and is not compliance testing. Lab results apply to the sample as received.