



Name	Indoor Hollywood A Flower
Price	\$1200.00 per
Video	Indoor Hollywood A Flower Video.mp4
Bag Appeal	This is a COOKIES Strain
Strain Type	INDICA HYBRID
Grow Type	Greenhouse
Overview	Delivers strong cerebrally focused effects with a sweet, earthy flavor. A subtle floral aroma sits underneath the dominant smell of lemon and diesel.

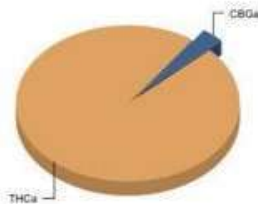


Hollywood THCA Flower

Date Accepted: 02/14/23

Potency Analysis

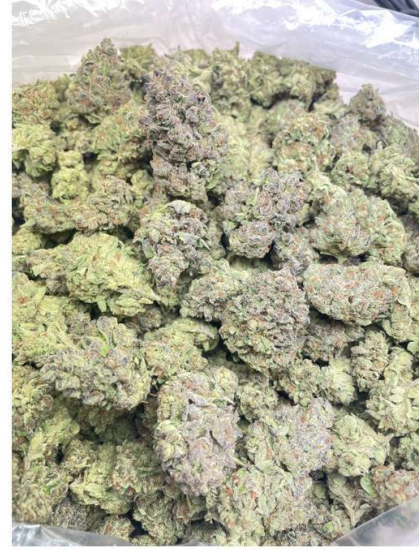
Analyte	Result (% weight)	Result (mg/g)
delta-9 THC	< LOQ	< LOQ
delta-8 THC	< LOQ	< LOQ
delta-10 THC	< LOQ	< LOQ
exo-THC	< LOQ	< LOQ
THCa	25.4	254
CBDa	< LOQ	< LOQ
CBD	< LOQ	< LOQ
CBN	< LOQ	< LOQ
CBC	< LOQ	< LOQ
CBGa	0.881	8.81
CBG	< LOQ	< LOQ
THCV	< LOQ	< LOQ
CBDV	< LOQ	< LOQ
THCVa	< LOQ	< LOQ
Total THC (THCa*0.877)+Δ9+Δ8+Δ10+exo-THC)	22.2	222
Total CBD (CBDA*0.877)+CBD)	< LOQ	< LOQ




Abraham Neuwirth For Noelle Doyle Mathis, Laboratory Supervisor

Accredited to ISO/IEC 17025-2017
Accreditation No. 82006

Bona Fides Laboratory, Inc. - 4910 Fox St. Unit E - Denver, CO 80216



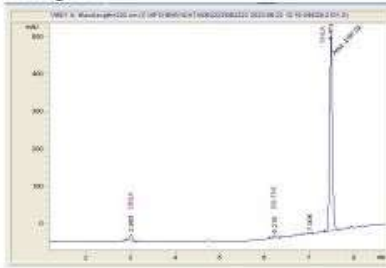
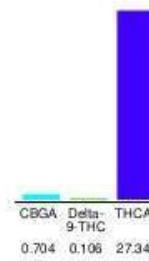
Name	Indoor Ice Cream Cake A Flower
Price	\$1450.00 per
Video	Indoor Ice Cream Cake A Flower Video.MP4
Bag Appeal	This bud has medium dense grape-shaped forest green nugs with thick orange hairs and frosty white crystal trichomes.
Aroma	Dessert gas, vanilla, pastry, spice, nutty, cheese, cream
Strain Type	INDICA
Grow Type	Indoor
Cannabinoid	THCA: The high starts with a rush of cerebral effects that lift your mind into a state of pure happiness and ease, pushing out any negative or racing thoughts immediately. Soon after, a relaxing body high will start to creep into your physical form, leaving you falling deeper and deeper into a couch-locked state of sedation before you eventually begin to drift away.
Overview	Ice Cream Cake is said to be perfect for treating those suffering from depression, chronic pain, insomnia, and nausea or appetite loss.


Sample 614-072623-014
Ice Cream Cake THCA

Sample Submitted: 07-26-2023; Report Date: 07-28-2023

Ice Cream Cake THCA

Plant Material: Flower

Chromatogram

Cannabinoid Profile

Cannabinoid Profile by HPLC
0.12%
 Delta-9-THC

0.00%
 CBD

28.15%
 Total Cannabinoids

Cannabinoid	% wt	mg/g
CBGA	0.704	7.04
Delta-9-THC	0.106	1.06
THCA	27.34	273.4
Total Cannabinoids	28.15	281.5
Calculated Total THC	24.08	240.8
Calculated CBD Yield	0.00	0.00
Calculated Total THC = Delta-9-THC + 0.877 * THCA		
Calculated Maximum CBD Yield = CBD + 0.877 * CBDA		

Marin Analytics, LLC
 250 Bel Marin Keys Blvd, Suite D4
 Novato, CA 94949
 833-321-TEST / info@marinanalytics.com


Sara Biancalana
 Chief Scientist

This sample has been tested by Marin Analytics, LLC using valid testing methodologies and a quality system. Values reported relate only to the sample tested. Marin Analytics, LLC makes no claims as to the efficacy, safety, or other risks associated with any detected or non-detected levels of any compounds reported herein. This Certificate shall not be reproduced except in full without the written approval of Marin Analytics, LLC. Copyright 2023 Marin Analytics, LLC All Rights Reserved.



Name	Indoor Strawberry Trufflez A Flower
Price	\$1650.00 per
Video	Indoor Strawberry Trufflez A Flower Video.mp4
Bag Appeal	Large to medium sized vividly green buds with orange pistils dripping in trichomes. Super frosty, super sticky.
Aroma	Fruity, tart, dessert, floral, pine, vanilla, strawberry,
Strain Type	HYBRID
Grow Type	Indoor
Overview	Cross of Strawberry Cough and White Trufflez Bright green with frosty white trichomes glistening throughout. Loud strawberry notes.

Report: COA Evaluation Summary

OLCC License No. 10087092BOA | ORELAP ID. 4147
 545 SW 2nd Street, Corvallis, OR 97333 | 541.257.5002 | services@preelab.com | Preelab.com

For OLCC/OHA Compliance Purposes.

Product Description

Client:
 Product Name: **Strawberry Trufflez Trimmed Bud**
 Harvest Lot: 07/9/2023
 Harvest Date: 07/9/2023
 Matrix: Cannabinoid Plant

License Number: ██████████
 Date Collected: 2023-07-29
 Date Received: 2023-07-30
 Report Date: 2023-08-02
 Report ID: ████████
 Tests Requested: Water Activity
 Moisture Analysis
 Cannabinoid Potency Analysis
 Pesticide Analysis
 Mycotoxin Analysis
 Terpene Analysis

Strawberry Trufflez Trimmed Bud

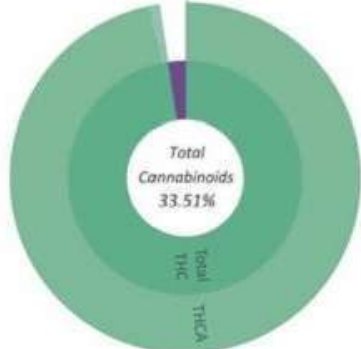


Evaluation Summary

Water Activity	Tested Value (aw)	Pass Criteria (aw)
Pass	0.48 aw	< 0.65 aw

Moisture Analysis	Tested Value (%)	Pass Criteria (%)
Pass	9.02 %	< 15.0 %

Cannabinoid Potency Analysis		Abv.	Dry Wt. %	Dry Wt. mg/g
Total THC * 28.72 % 287.2 mg/g	Total CBD * < LOQ < LOQ	THCA	32.42 %	324.2 mg/g
		Δ-9-THC	0.28 %	2.8 mg/g
		Δ-8-THC	< LOQ	< LOQ
		THCV	< LOQ	< LOQ
		CBOA	< LOQ	< LOQ
		CBD	< LOQ	< LOQ
		CBGA	0.81 %	8.1 mg/g
		CBG	< LOQ	< LOQ
		CBOVA	< LOQ	< LOQ
		CBDV	< LOQ	< LOQ
		CBN	< LOQ	< LOQ
CBL	< LOQ	< LOQ		
CBC	< LOQ	< LOQ		



Pesticide Analysis	Pesticide Status
Pass	No pesticides were detected above Oregon's action limit as stated in OAR 333-007-0400.



Name	Indoor Black Runtz A Flower
Price	\$1750.00 per
Video	Indoor Black Runtz A Flower Video.mp4
Bag Appeal	Large to medium sized buds. Purple and green deep coloration. Dripping in trichomes, good density. Prominent orange pistils.
Aroma	Creamy citrus, grape, lemon, sweet berry, classic candy Runtz nose.
Strain Type	INDICA
Cannabinoid	THCA
Overview	Black Runtz effects makes people feel relaxed, happy, and aroused.

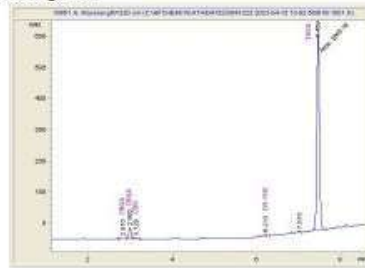


Sample 623-072923-010
 Black Runtz (THCa Hemp Flower)
 Sample Submitted: 07-29-2023; Report Date: 08-02-2023

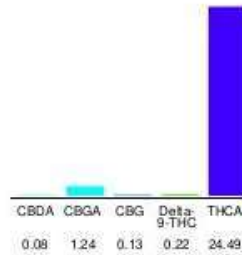
Black Runtz (THCa Hemp Flower)

Plant Material: Flower

Chromatogram



Cannabinoid Profile



Cannabinoid Profile by HPLC

0.22%
Delta-9-THC

0.00%
CBD

26.16%
Total Cannabinoids

Cannabinoid	% wt	mg/g
CBDA	0.08	0.8
CBGA	1.24	12.4
CBG	0.13	1.3
Delta-9-THC	0.22	2.2
THCA	24.49	244.9
Total Cannabinoids	26.16	261.6
Calculated Delta-9-THC Yield	21.70	216.98
Calculated CBD Yield	0.07	0.70

Calculated Maximum Delta-9-THC Yield = Delta-9-THC + 0.877 * THCA
 Calculated Maximum CBD Yield = CBD + 0.877 * CBDA

Marin Analytics, LLC
 250 Bel Marin Keys Blvd, Suite D4
 Novato, CA 94949
 415-936-6477 / sarabiancalana1@gmail.com

Sara Biancalana
Sara Biancalana
 Chief Scientist

This sample has been tested by Marin Analytics, LLC using valid testing methodologies and a quality system. Values reported relate only to the sample tested. Marin Analytics, LLC makes no claims as to the efficacy, safety, or other risks associated with any detected or non-detected levels of any compounds reported herein. This Certificate shall not be reproduced except in full, without the written approval of Marin Analytics, LLC. Copyright 2022 Marin Analytics, LLC. All Rights Reserved.



Name	Indoor Tropsanto A Flower
Price	\$1650.00 per
Video	Indoor Tropsanto A Flower Video.MP4
Bag Appeal	Nice dense green buds, large to medium sized buds. Grape shaped olive green buds with vivid red orange hairs. Lime green tones and nice trichome content.
Aroma	Herbal, OG, Nutty, Spicy, Sweet, Cookie/Pastry, Cinnamon, Almond.
Strain Type	INDICA
Grow Type	Indoor
Overview	You'll find your mind filled with a sense of expansive euphoria that helps ease away negative moods or thoughts and replace them with a sense of heavy calm.



Potency Results

Sample Name: *Tropsanto*
 Client:
 Client Batch ID:

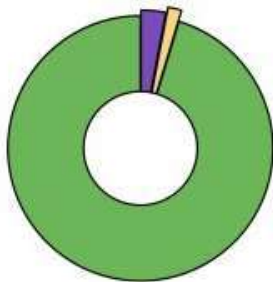
Pinnacle-Analytics.com
 3549 Lear Way, Suite 101
 Medford OR 97504
 P:(541)300-8217

Sample ID: rC-H-109-D3	Date Sampled: 7/29/2023
Matrix: Flower	Date Reported: 8/2/2023
Prep Analyst: Megan E.	Client License:
Analysis Method: 0630322+1 H4 4-21-2022 #1.lcm	For R&D Purposes Only
Sampling Method: N/A	
Reference Method: JCB 2009: HPLC/DAD	
Analysis Batch: 8-01-2023 H4 0, 101, 109, 185, 205, 208 Flower	

Total THC (THCA*0.877+d9-THC)	22.8%
Total CBD (CBDA*0.877+CBD)	<LOQ%
Moisture Content	13.1%

Cannabinoid	% Weight	mg/g
CBDVA	<LOQ	<LOQ
CBDV	<LOQ	<LOQ
CBDA*	<LOQ	<LOQ
CBGA	0.497	4.97
CBG	<LOQ	<LOQ
CBD*	<LOQ	<LOQ
THCV	<LOQ	<LOQ
CBN	<LOQ	<LOQ
d9-THC*	0.274	2.74
d8-THC	<LOQ	<LOQ
CBC	<LOQ	<LOQ
THCA*	25.7	257.0
Total Cannabinoids	26.5	165.0

*ORELAP Accredited Analyte
 Limit Of Quantitation: 0.1%, analyte not measured



- CBGA
- d9-THC*
- THCA*



These test results may not be altered or reproduced except in full without the permission of Pinnacle Analytics. These results were generated following the Oregon Administrative Rules and in accordance with the NELAP Institute under ORELAP License #4152 Report generated by Routine_Potency_Rev10_7-17-2022


 Kris Ford, PhD
 Lab Director



Name	Indoor Gary Payton A Flower
Price	\$1850.00 per
Video	Indoor Gary Payton A Flower Video.mp4
Bag Appeal	Large to medium bright green buds dripping with frosty trichomes and showcasing bright orange pistils, some slight purple undertones scattered about. Sticky vividly green buds.
Aroma	Strong diesel gas nose, spicy pepper, pinesol, chem
Strain Type	HYBRID
Overview	Energizing strain that may lend its potential for a long-lasting calm effect that may soothe the mind and body. Calm effect ideal to spark creativity.

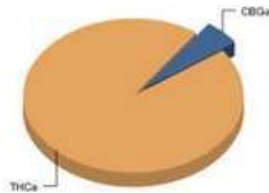


Gary Payton

Date Accepted: 08/02/23

Potency Analysis

Analyte	Result (% weight)	Result (mg/g)
delta-9 THC	< LOQ	< LOQ
delta-8 THC	< LOQ	< LOQ
delta-10 THC	< LOQ	< LOQ
exo-THC	< LOQ	< LOQ
THCa	24.3	243
CBDa	< LOQ	< LOQ
CBD	< LOQ	< LOQ
CBN	< LOQ	< LOQ
CBC	< LOQ	< LOQ
CBGa	1.32	13.2
CBG	< LOQ	< LOQ
TH-CV	< LOQ	< LOQ
CBDV	< LOQ	< LOQ
THCVa	< LOQ	< LOQ
Total THC ((THCa*0.877)+Δ9+Δ8+Δ10+exo-THC)	21.3	213
Total CBD ((CBDA*0.877)+CBD)	< LOQ	< LOQ

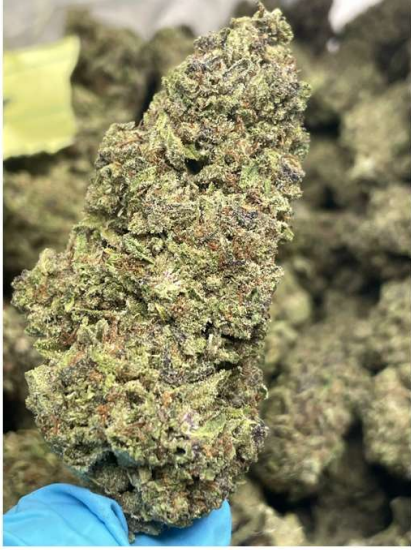



Jace Zipp, For Noelle Doyle Mathis, Laboratory Supervisor

Accredited to ISO/IEC 17025-2017

Accreditation No. 82006

Bona Fides Laboratory, Inc. - 4910 Fox St. Unit E - Denver, CO 80216



Name	Greenhouse Cherry Fritter A Flower
Price	\$1400.00 per
Video	Greenhouse Cherry Fritter A Flower Video.MP4
Bag Appeal	Cherry Fritter buds are beautiful, too, with long spade-shaped forest green nugs that are dotted with plenty of thin reddish amber hairs and a coating of super sticky resin.
Aroma	Berry, Cherry, Coffee, Earthy, Herbal, Sweet
Strain Type	HYBRID
Grow Type	Greenhouse
Cannabinoid	THCA
Overview	The Cherry Fritter high will hit you almost as soon as you exhale, lifting your spirits and infusing you with an almost tingly frenzied euphoria.

Gobi Hemp - Certificate of Analysis



Manifest: 23 08 030003
Sample ID: 1A-GHEMP-2308 030003-0001
Sample Name: CherryFrit - 08-03-2023
Sample Type: Flower
Client ID:
Client:
Address:

Test Performed: Potency
Report No: P-2308 030003-V2
Receive Date: 2023-08-03
Test Date: 2023-08-04
Report Date: 2023-08-04
Sample Condition: Good
Method Reference: GH-OP-06

Scope: The content of 21 cannabinoids was determined by an in-house developed method certified by CDPHE for solvent extraction followed by High Performance Liquid Chromatography with Diode Array Detection.

	percent	mg/g
Total THC	20.42	204.15
Total CBD	ND	ND
Total CBG	0.66	6.59
Total Cannabinoids	24.15	241.52
Total THC:CBD Ratio		NA

Total CBD = CBD + (CBDA x 0.877); Total CBG = CBG + (CBGA x 0.877); Total THC = Δ^9 THC + (THCA x 0.877)

Cannabinoids	percent	mg/g
CBDVA	ND	ND
CBDV	ND	ND
CBDA	ND	ND
CBGA	0.75	7.51
CBG	ND	ND
CBD	ND	ND
Δ^9 THCV	ND	ND
Δ^9 THCVA	T	T
CBN	ND	ND
CBNA	ND	ND
EXO-THC	ND	ND
Δ^9 THC	0.29	2.94
Δ^8 THC	ND	ND
Δ^{10} -S THC	ND	ND
CBL	ND	ND
Δ^{10} -R THC	ND	ND
CBC	ND	ND
Δ^9 THCA	22.94	229.44
CBGA	0.16	1.63
CBLA	ND	ND
CBT	ND	ND

ND - not detected; T - trace; ULOQ - upper limit of quantitation

Percent Moisture: 8%

Lab Comments:

Jon Person

Jon Person Client Relations Manager

2023-08-04

Date

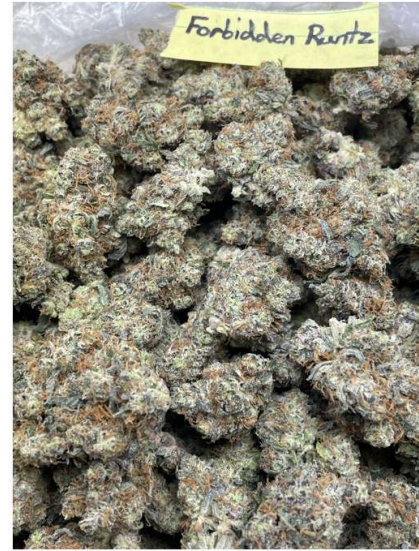


This report has been prepared by Gobi Hemp Laboratory exclusively for our Client and their Authorized Representatives. All analytical work is conducted in accordance with a mutually agreed upon scope of work and the terms and conditions as expressed in the Gobi Hemp Laboratory Service Agreement. This report is not to be reproduced in whole or in part without prior written approval. The results shown on this report relate only to the samples submitted to the laboratory. Estimated Uncertainty available upon request. Only cannabinoids included in the table above are ISO/IEC 17025:2017 accredited.

• Gobi Hemp •

• 3940 Youngfield St. • Wheat Ridge CO 80033 • ISO/IEC 17025:2017 Accredited • (303) 955-4934 •





Name	Indoor Forbidden Runtz A Flower
Price	\$2400.00 per
Video	Indoor Forbidden Runtz A Flower Video.MP4
Bag Appeal	This bud has dense spade-shaped emerald green nugs with lots of long, dark orange hairs and a coating of chunky, frosty white crystal trichomes.
Aroma	Berry, Earthy, Fruity, Sweet, Woody, Runtz, Citrus, Tropical, Exotic, Candy, Gas
Strain Type	INDICA
Grow Type	Indoor
Cannabinoid	THCA
Overview	A calming physical high accompanies this heady lift, helping to relax your entire body with a light tingle that can quickly become arousing at times.

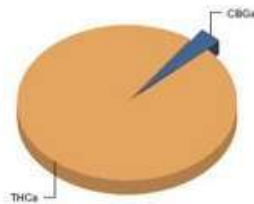


Forbidden Runtz

Date Accepted: 08/02/23

Potency Analysis

Analyte	Result (% weight)	Result (mg/g)
delta-9 THC	< LOQ	< LOQ
delta-8 THC	< LOQ	< LOQ
delta-10 THC	< LOQ	< LOQ
exo-THC	< LOQ	< LOQ
THCa	31.4	314
CBDa	< LOQ	< LOQ
CBD	< LOQ	< LOQ
CBN	< LOQ	< LOQ
CBC	< LOQ	< LOQ
CBGa	1.08	10.8
CBG	< LOQ	< LOQ
THCV	< LOQ	< LOQ
CBDV	< LOQ	< LOQ
THCVa	< LOQ	< LOQ
Total THC (THCa*0.877)+Δ9+Δ8+Δ10+exo-THC)	27.5	275
Total CBD (CBDA*0.877)+CBD)	< LOQ	< LOQ



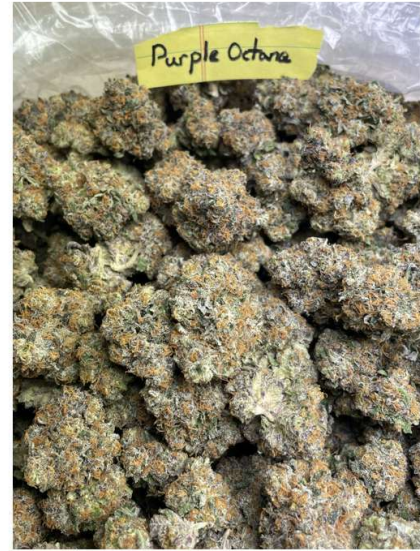
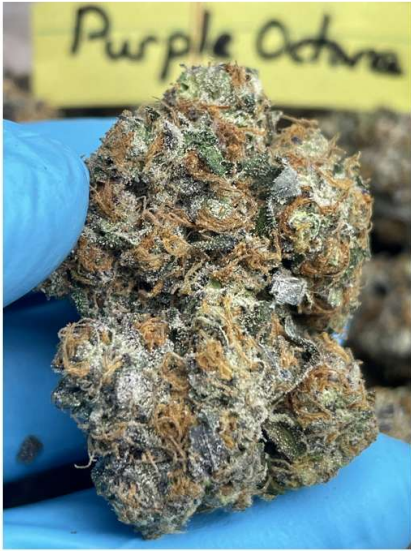
Taylor Ramsey

Taylor Ramsey For Noelle Doyle Mathis, Laboratory Supervisor

Accredited to ISO/IEC 17025-2017

Accreditation No. 82006

Bona Fides Laboratory, Inc. - 4910 Fox St. Unit E - Denver, CO 80216



Name	Indoor Purple Octane A Flower
Price	\$2400.00 per
Video	Indoor Purple Octane A Flower Video.MP4
Bag Appeal	Completely covered in crystal like trichomes, super frosty. Punch in the face nose, purple, forrest green, orange dense buds. Medium sized consistent. Sticky and shiny.
Aroma	Incredibly powerful nose, diesel gas, grapes, cream, berries, spicy, sweet. This is a 10/10. Absolute punch in the face.
Strain Type	INDICA
Grow Type	Indoor
Cannabinoid	THCA
Overview	Sudden feeling lifted and euphoric out of nowhere, without a care in the world. A light tingle will begin within your body, growing into a full buzz.

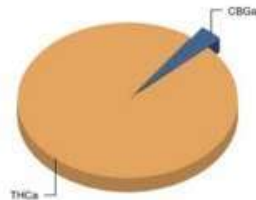


Purple Octane

Date Accepted: 08/02/23

Potency Analysis

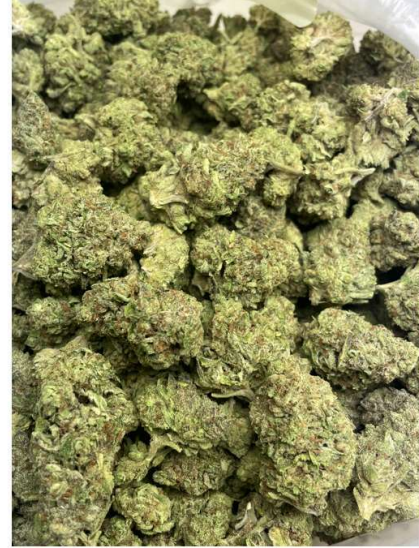
Analyte	Result (% weight)	Result (mg/g)
delta-9 THC	< LOQ	< LOQ
delta-8 THC	< LOQ	< LOQ
delta-10 THC	< LOQ	< LOQ
exo-THC	< LOQ	< LOQ
THCa	30.2	30.2
CBDa	< LOQ	< LOQ
CBD	< LOQ	< LOQ
CBN	< LOQ	< LOQ
CBC	< LOQ	< LOQ
CBGa	1.04	10.4
CBG	< LOQ	< LOQ
THCV	< LOQ	< LOQ
CBGV	< LOQ	< LOQ
THCVa	< LOQ	< LOQ
Total THC (THCa*0.877)+Δ9+Δ8+Δ10+exo-THC)	26.5	265
Total CBD (CBDa*0.877)+CBD)	< LOQ	< LOQ




Abraham Neuwirth For N

Accredited to ISO/IEC 17025-2017
Accreditation No. 82006

Bona Fides Laboratory, Inc. - 4910 Fox St. Unit E - Denver, CO 80216



Name	Indoor London Pound Cake A Flower
Price	\$1400.00 per
Video	Indoor London Pound Cake A Flower Video.MP4
Bag Appeal	This bud has dense spade-shaped olive green nugs with lots of thin orange hairs and a coating of tiny frosty amber crystal trichomes. Larger buds through.
Aroma	Berry, Earthy, Grape, Herbal, Pine, Spicy
Strain Type	INDICA
Grow Type	Indoor
Cannabinoid	: You'll feel a light lift at the onset of the high that fills you with a calming sense of centered focus, gently easing away negative or racing thoughts immediately. As your mind settles, a relaxing body high will sneak up on you, lulling you into a slightly couch-locked state that doesn't cause too much sedation or sleepiness at all.
Overview	The London Poundcake high is just as delightful as the flavor, with calming and centered effects that are both relaxing and lifting in nature.

CERTIFICATE OF ANALYSIS

Prepared for:

London Pound Cake

Batch ID or Lot Number: 1	Test: Potency	Reported: 14Aug2023	USDA License: N/A
Matrix: Plant	Test ID: T000228101	Started: 10Aug2023	Sampler ID: N/A
	Method(s): TM14 (HPLC-DAD)	Received: 10Aug2023	Status: N/A

Cannabinoids	LOD (%)	LOQ (%)	Result (%)	Result (mg/g)	Notes
Cannabichromene (CBC)	0.018	0.062	0.080	0.80	
Cannabichromenic Acid (CBCA)	0.016	0.057	1.070	10.70	
Cannabidiol (CBD)	0.064	0.165	<LOQ	<LOQ	
Cannabidiolic Acid (CBDA)	0.065	0.169	ND	ND	
Cannabidivarin (CBDV)	0.015	0.039	ND	ND	
Cannabidivarinic Acid (CBDVA)	0.027	0.071	ND	ND	
Cannabigerol (CBG)	0.010	0.035	0.110	1.10	
Cannabigerolic Acid (CBGA)	0.042	0.148	0.540	5.40	
Cannabinol (CBN)	0.013	0.046	ND	ND	
Cannabinolic Acid (CBNA)	0.029	0.101	ND	ND	
Delta 8-Tetrahydrocannabinol (Delta 8-THC)	0.050	0.176	ND	ND	
Delta 9-Tetrahydrocannabinol (Delta 9-THC)	0.045	0.160	ND	ND	
Delta 9-Tetrahydrocannabinolic Acid (THCA-A)	0.040	0.142	20.690	206.90	
Tetrahydrocannabinarin (THCV)	0.009	0.032	ND	ND	
Tetrahydrocannabinarinic Acid (THCVA)	0.035	0.125	0.560	5.60	
Total Cannabinoids			23.050	230.50	
Total Potential THC			18.145	181.45	
Total Potential CBD			0.000	0.00	

Final Approval

Karen Winterheimer
14Aug2023
03:22:00 PM MST

Sam Smith
14Aug2023
03:23:00 PM MST

PREPARED BY / DATE

APPROVED BY / DATE

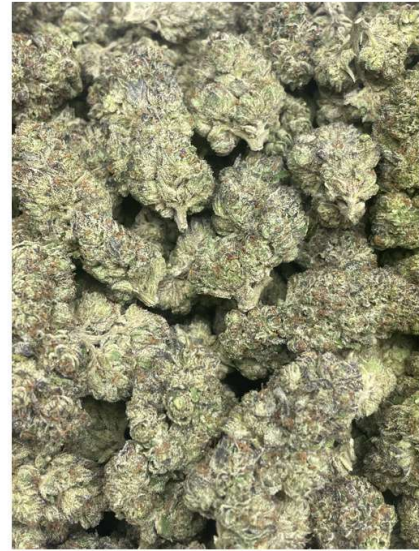
<https://results.botanacor.com/api/v1/results/uid:c7397ab4d73b-42d845a06c78897054b-1>

Definitions

% = % (w/w) = Percent (weight of analyte / weight of product). ND = None Detected (defined by dynamic range of the method).
Total Potential Delta 9-THC or CBD is calculated to take into account the loss of a carboxyl group during decarboxylation step, using the following formulas: Total Potential Delta 9-THC = Delta 9-THC + (Delta 9-THCa * (0.877)) and Total CBD = CBD + (CBDA * (0.877)).

Testing results are based solely upon the sample submitted to SC Laboratories, Inc. in the condition it was received. SC Laboratories, Inc. warrants that all analytical work is conducted professionally in accordance with all applicable standard laboratory practices using validated methods. Data was generated using an unbroken chain of comparison to NIST traceable Reference Standards and Certified Reference Materials. This report may not be reproduced, except in full, without the written approval of SC Laboratories, Inc. (SC) IEC: 17025:2017. Accredited by A2LA.





Name	Indoor Grape Gas A Flower
Price	\$1650.00 per
Video	Indoor Grape Gas A Flower Video.MP4
Bag Appeal	This bud has dense grape-shaped oversized bright neon green nuggets with dark purple undertones, thin orange hairs and a coating of frosty, chunky purple-white tinted trichomes.
Aroma	This bud packs a sweet and fruity berry grape flavor with hints of savory gasoline and dank diesel. The aroma follows the same profile but to the extreme, with a heavy pungent diesel overtone accented by spicy dank berries and earthy grapes.
Strain Type	Hybrid
Grow Type	Indoor
Cannabinoid	THCA: Creative, Euphoria, Happy, Relaxing, Uplifting
Overview	This bud packs a sweet and fruity berry grape flavor with hints of savory gasoline and dank diesel. The aroma follows the same profile but to the extreme, with a heavy pungent diesel overtone accented by spicy dank berries and earthy grapes. The Grape Gasoline high hits just as hard as the flavor, with energizing effects that quickly fade into happy soothing relaxation. You'll feel a mental energy influx hit you a few minutes after your final exhale, launching through your brain and pushing out any negative racing thoughts. You'll feel creative with a light sense of focus that has you fading in and out of existence at times. A relaxing body high comes next, washing over you and settling down aching or painful muscles and joints. In combination with its high 21-28% average THC level, these effects make Grape Gasoline a great choice for treating those suffering from conditions such as depression, chronic fatigue, appetite loss or nausea, mood swings and chronic fatigue. This bud has dense grape-shaped

oversized bright neon green nuggets with dark purple undertones, thin orange hairs and a coating of frosty, chunky purple-white tinted trichomes.



Sample ID:
Date issued: 7/11/23

Certificate of Analysis

For IBD Use Only - Not a California Compliance Certificate.

Grape Gas

Client:



Total CBD	ND
Total THC	24.87 %
Total Cannabinoids	28.33 %

Sample Name:
Grape Gas

Matrix:
Plant

Description:
Flower

Unit Mass:
1 g per unit

Sample ID: MDATA070323

Testing ID: 43-SAMPGG3245

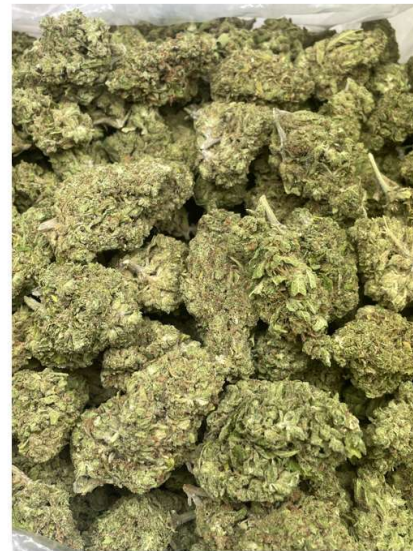
Date Received:
7/10/2023

Marie

Approved By:
Marie True, M.S.
Laboratory Manager

This certificate of analysis is responsible for the tested sample only and is for research use only. This certificate of analysis shall not be reproduced, except in its entirety, without the written approval of FESA Labs. FESA Labs shall not be liable for any damage that may result from the data contained herein in any way. FESA Labs makes no claim to the efficacy, safety or other risks associated with any detected or non-detected amounts of any substances reported herein. If there are any questions with this report please email in fo@fesalabs.com. This certificate of analysis is intended only for the use of the party to whom it is addressed and may contain information that is confidential or protected from disclosure under applicable law. If you have received this document in error, please immediately contact us.

References: Limit of quantitation (LOQ), not detected (ND), not tested (NT)



Name	Greenhouse Goji Gushers A Flower
Price	\$1200.00 per
Video	Greenhouse Goji Gushers A Flower Video.MP4
Bag Appeal	. This bud has thick rounded fluffy minty green nugs with dark olive undertones, long thin orange hairs and a coating of tiny white crystal trichomes.
Aroma	Citrus, Earthy, Herbal, Sour, Spicy, Tropical
Strain Type	HYBRID
Grow Type	Greenhouse
Cannabinoid	THCA: Body High, Creative, Euphoria, Giggly, Tingly, Uplifting
Overview	The Goji Gushers high is just as bright as the flavor, with effects that hit both mind and body, launching you into a giddy state of euphoria that is totally pain-free in nature. You'll feel motivated and creative with a giddy sense that has you fading in and out of focus, falling victim to fits of giggles before you even realize what's happening. A tingly body high accompanies this heady lift, relaxing your aching muscles without causing any sedation in the slightest



Sample ID:
Date Issued: 7/20/23

Certificate of Analysis

For R&D Use Only - Not a California Compliance Certificate

Goji Gushers

Client:

Total CBD	ND
Total THC	25.14 %
Total Cannabinoids	28.63 %



Sample Name:
Goji Gushers

Matrix:
Plant

Unit Mass:
1 g per unit

Sample ID: SAMPGG071623

Date Received:
7/20/2023



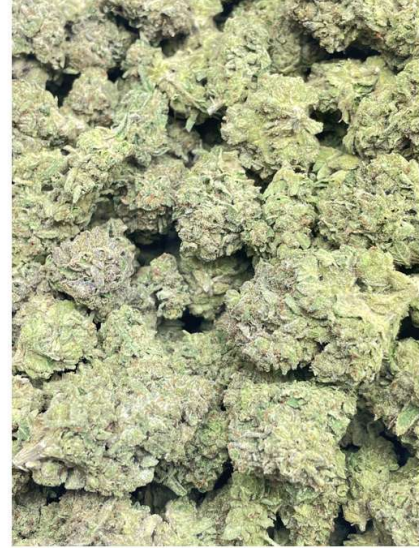
Approved By:
Marie True, M.S.
Laboratory Manager

This certificate of analysis is responsible for the tested sample only and is for research and development (R&D) use only. This certificate of analysis shall not be reproduced, except in its entirety, without the written approval of FESA Labs. FESA Labs shall not be liable for any damage that may result from the data contained here in in any way. FESA Labs makes no claim to the efficacy, safety or other risks as associated with any detected or non-detected amounts of any substances reported herein. If there are any questions with this report please email info@fesalabs.com. This certificate of analysis is intended only for the use of the party to whom it is addressed and may contain information that is confidential or protected from disclosure under applicable law. If you have received this document in error, please immediately contact us.

References: Limit of quantitation (LOQ), not detected (ND), not tested (NT)

FESA Labs
2002 South Grand Avenue Suite A
Santa Ana, CA 92705
(714) 540-0172
www.fesalabs.com

Page 1 of 2
7/20/2023 16:46:30



Name	Indoor Gelato 41 A Flower
Price	\$1450.00 per
Video	Indoor Gelato 41 A Flower Video.MP4
Bag Appeal	This bud has heart-shaped forest green nugs with thin orange hairs, dusty undertones and golden-white trichomes.
Aroma	Gelato 41 has a super sweet and fruity creamy vanilla flavor with touches of sour citrusy lemon and earthy woods.
Strain Type	SATIVA
Overview	The Gelato 41 high will settle in a few minutes after your final delicious toke, filling your mind with an expansive sense of happiness. This inner bliss will push out any negative moods or racing thoughts, replacing them with happy creativity and a touch of focus. A deep physical calm accompanies this heady lift, helping to keep your body settled as your mind fades away.



Sample 623-061223-007

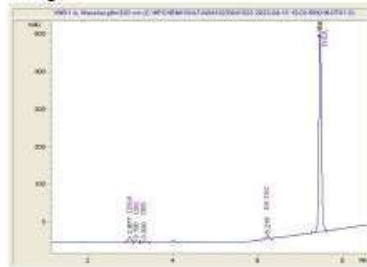
Gelato 41 THCa Hemp Flower

Sample Submitted: 06-12-2023; Report Date: 06-14-2023

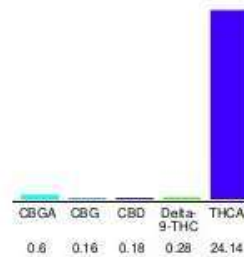
Gelato 41 THCa Hemp Flower

Plant Material: Flower

Chromatogram



Cannabinoid Profile



Cannabinoid Profile by HPLC

0.28%

Delta-9-THC

0.18%

CBD

25.36%

Total Cannabinoids

Cannabinoid	% wt	mg/g
CBGA	0.6	6.0
CBG	0.16	1.6
CBD	0.18	1.8
Delta-9-THC	0.28	2.8
THCA	24.14	241.4
Total Cannabinoids	25.36	253.6
Calculated Delta-9-THC Yield	21.45	214.51
Calculated CBD Yield	0.18	1.80
Calculated Maximum Delta-9-THC Yield = Delta-9-THC + 0.877 * THCA		
Calculated Maximum CBD Yield = CBD + 0.877 * CBDA		

Marin Analytics, LLC

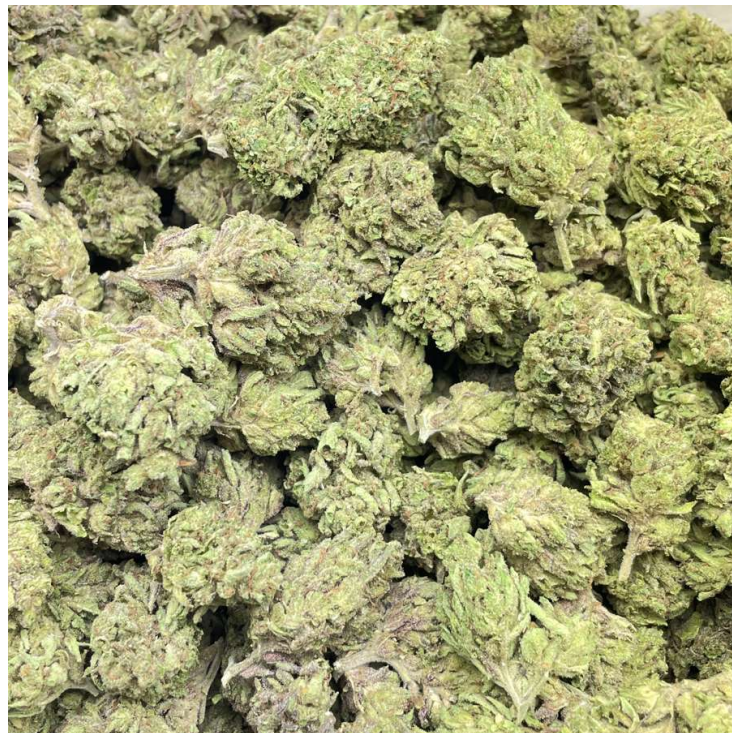
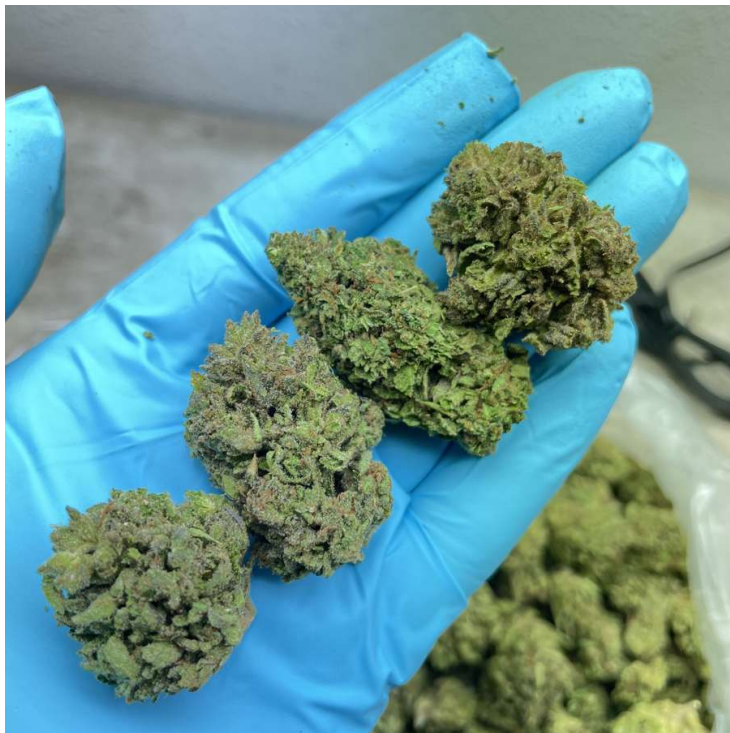
250 Bel Marin Keys Blvd, Suite D4
Novato, CA 94949

415-936-6477 / sarabiancalana1@gmail.com



Sara Biancalana
Chief Scientist

This sample has been tested by Marin Analytics, LLC using valid testing methodologies and a quality system. Values reported relate only to the sample tested. Marin Analytics, LLC makes no claims as to the efficacy, safety or other risks associated with any detected or non-detected levels of any compounds reported herein. This Certificate shall not be reproduced except in full, without the written approval of Marin Analytics, LLC. Copyright 2022 Marin Analytics, LLC. All Rights Reserved.



Name	Indoor Zookies A Flower
Price	\$1250.00 per
Video	Indoor Zookies A Flower Video.MP4
Bag Appeal	Zookies buds have dense rounded olive green nuggets with dark purple undertones, thin orange hairs, and a coating of frosty thick white crystal trichomes.
Aroma	This bud has a sweet sand spicy peppery cookie flavor with a light earthy exhale. The aroma is very earthy and floral with a rich peppery cookie overtone that's accented by tropical fruits and spices.
Strain Type	HYBRID
Grow Type	Greenhouse
Cannabinoid	: Body High, Calming, Relaxing, Sleepy, Uplifting
Overview	Zookies is said to be perfect for treating those suffering from conditions such as insomnia, chronic pain, depression, muscle spasms or cramps, and nausea or appetite loss.

Certificate of Analysis

Zookies

Client:



Total CBD	ND
Total THC	24.12 %
Total Cannabinoids	27.46 %

Sample Name:
Zookies

Matrix:
Plant

Description:
Flower

Unit Mass:
1 g per unit

Sample ID:

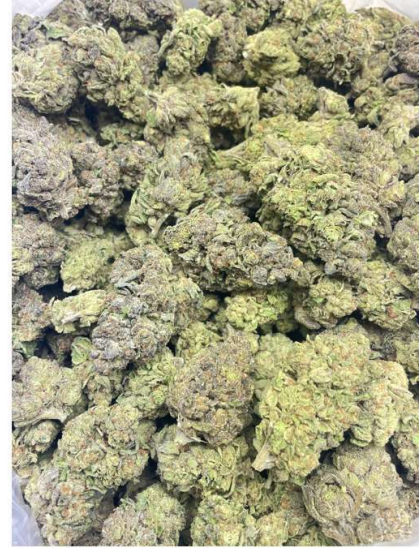
Date Received:
07/27/2023

Marie

Approved By:
Marie True, M.S.
Laboratory Manager

This certificate of analysis is responsible for the tested sample only and is for research use only. This certificate of analysis shall not be reproduced, except in its entirety, without the written approval of FESA Labs. FESA Labs shall not be liable for any damage that may result from the data contained herein in any way. FESA Labs makes no claim to the efficacy, safety or other risks associated with any detected or non-detected amounts of any substances reported herein. If there are any questions with this report please email info@fesalabs.com. This certificate of analysis is intended only for the use of the party to whom it is addressed and may contain information that is confidential or protected from disclosure under applicable law. If you have received this document in error, please immediately contact us.

References: limit of quantitation (LOQ), not detected (ND), not tested (NT)



Name	Indoor Jealousy Mintz A Flower
Price	\$1450.00 per
Video	Indoor Jealousy Mintz A Flower Video.MP4
Bag Appeal	Jealousy Mintz is a deliciously green and purple strain with dense, resin-coated buds that burst with fruity flavor.
Aroma	Jealousy Mintz features aromas like grape, citrus, and skunk.
Strain Type	INDICA
Grow Type	Indoor
Cannabinoid	: Jealousy Mintz effects include feeling relaxed, happy, and euphoric. Medical marijuana patients often choose Jealousy Mintz when dealing with symptoms associated with stress, insomnia, and pain.
Overview	Jealousy Mintz features flavors like grape, citrus, and skunk. The dominant terpene of this strain is myrcene, which contributes to its sedating and anti-inflammatory properties.



Sample ID:
Date Issued: 7/25/23

Certificate of Analysis

For R&D Use Only - Not a California Compliance Certificate

Jealousy Mintz

Client:



Total CBD	ND
Total THC	26.03 %
Total Cannabinoids	29.65 %

Sample Name:
Jealousy Mintz

Matrix:
Plant

Unit Mass:
1 g per unit

Sample ID:

Date Received:
7/25/2023

Marie

Approved By:
Marie True, M.S.
Laboratory Manager

This certificate of analysis is responsible for the tested sample only and is for research and development (R&D) use only. This certificate of analysis shall not be reproduced, except in its entirety, without the written approval of FESA Labs. FESA Labs shall not be liable for any damage that may result from the data contained here in any way. FESA Labs makes no claim to the efficacy, safety or other risks as associated with any detected or non-detected amounts of any substances reported herein. If there are any questions with this report please email info@fesalabs.com. This certificate of analysis is intended only for the use of the party to whom it is addressed and may contain information that is confidential or protected from disclosure under applicable law. If you have received this document in error, please immediately contact us.

References: Limit of quantitation (LOQ), not detected (ND), not tested (NT)

FESA Labs
2002 South Grand Avenue Suite A
Santa Ana, CA 92705
(714) 540-0172
www.fesalabs.com

Page 1 of 2
7/25/2023 16:42:18